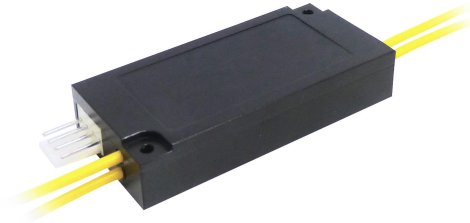


2×2A Optical Switch

Features

- Low Insertion Loss
- Wide Wavelength Range
- Low Crosstalk
- High Stability and High Reliability
- Epoxy-free on Optical Path
- Latching and Non-latching



Application

- OADM
- MAN
- System Monitoring
- Component Testing




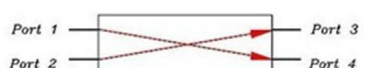
Performance

Parameters		GZ-2×2A
Wavelength Range	nm	1260~1625
Operating Wavelength	nm	1310/1550
Insertion Loss	dB	Typ:0.8 Max:1.0
Return Loss	dB	≥50
Crosstalk	dB	≥60
PDL	dB	≤0.05
WDL	dB	≤0.25
TDL	dB	≤0.25
Repeatability	dB	≤±0.02
Power Supply	v	3.0 or 5.0
Lifetime	times	≥10 ⁷
Switch Time	ms	≤8
Transmission Power	mW	≤500
Operating Temperature	℃	-20~+70
Storage Temperature	℃	-40~+85
Weight	g	25
Dimension	mm	(L)55.0×(W)26.0×(H)10.0 ±0.2

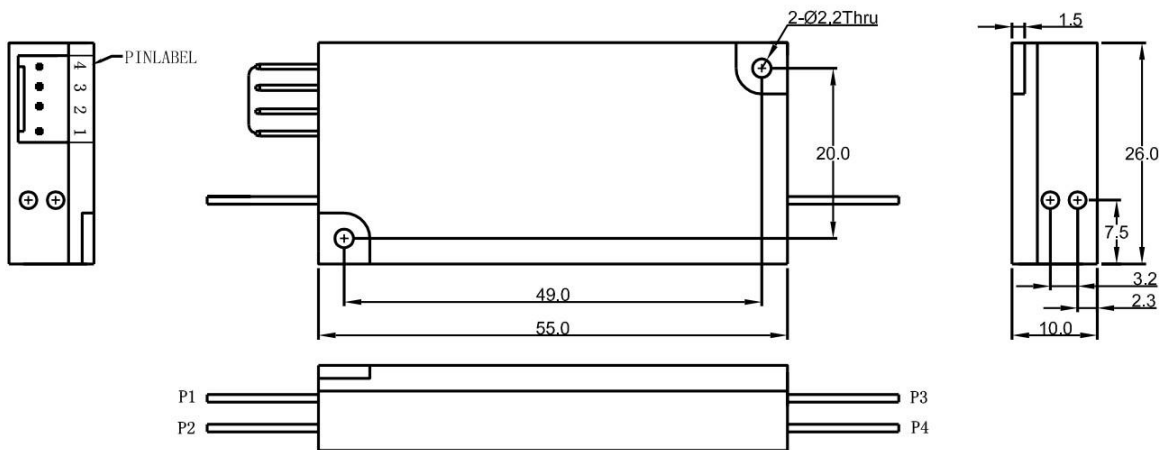
Electric

Specifications	Voltage	Current	Resistance
5V Latching	4.5~5.5	36~44mA	125Ω
5V Non-latching	4.5~5.5	25~31mA	178Ω
3V Latching	2.7~3.3	54~66mA	50Ω
3V Non-latching	2.7~3.3	42~51mA	65Ω

Pins

Control Model	Electric Drive		Status Sensor	Optical Path
	Pin 1	Pin 2	Pin3- Pin4	
Latching	V+	GND	Open	P1-P3、P2-P4 
	GND	V+	Close	P1-P4、P2-P3 
Non-latching	V+	GND	Close	P1-P3、P2-P4 
	GND	GND	Open	P1-P4、P2-P3 

Dimension



Ordering Information

Mode	Wavelength	Voltage Type	Control Model	Fiber Type	Fiber Diameter	Fiber Length	Connector
S=SM M=MM	85= 850nm 13=1310nm 14=1490nm 15= 1550nm 16=1625nm 13/15=1310/1550 nm X=Others	3=3V 5=5V	L=Latching N=Non-Latching	5=50/125 6=62.5/125 9=9/125 X= Others	25=250um 90=900um 20=2.0mm X=Others	05=0.5m 10=1.0m 15=1.5m X=Others	O=None 1= FC/PC 2=FC/APC 3=SC/PC 4=SC/APC 5=ST/PC 6= ST/APC 7= LC/PC 8= LC/APC X=Others